

Catbells, 22 Hewetson Court, Main Street, Keswick
Access Guide

If you have any queries regarding the following guide please email angela@keswickholidayhomes.co.uk or phone 01768 201042. I will be pleased to help in any way that I can, Angela Spooner

General Statement

Catbells is a modern second floor apartment in a quiet residential low rise block built in the early 1990s. The entrance is via the ground floor and all accommodation is all on the second floor.



- All skirting boards are white contrasting with the light coloured walls and fawn carpet or linoleum floors.
- All bedrooms have lights beside the beds as well as main lights, most sockets are around 43cm high.
- The property is totally non smoking.
- The lounge, hall and main bedroom have night storage heaters which have individual controls.
- There is an electric panel heater in the twin bedroom and an electric fire in the lounge.
- All electrical equipment is PAT tested annually for safety.
- Mobile coverage is generally good for any service although in exceptionally bad weather, signal may be interrupted.
- The bus terminal is just 200 metres away. The nearest railway station is Penrith some 18 miles away. There is a regular bus service to Keswick.
- Shops in the town centre are approximately 2 minutes walk away – the theatre and lake are a further 10 minutes walk. Car hire and taxis are available in the town.
- There are RADAR toilets in the town in Central Car Park (6 minutes walk) and at Lakeside by the Theatre by the Lake.
- Our property information and all correspondence can be supplied in large print on request.
- No furnishings or bedding contain feathers for guest's comfort.
- The property has smoke alarms and a fire alarm system which is checked regularly.

Car Park

Space No 22 is 220cm wide and 5m long. The car park is tarmac and is level.

Hewetson Court Entrance

Catbells, no 22 is accessed through the main entrance of Cedar Block at Hewetson Court, facing the car park entrance.

There are two threshold steps to the front door. Step one is 18cm high and 30cm deep and step two 18cm high and 90 cm deep. There is an optional handrail at the entrance, at 1m high.

The main building front door 80cm wide. There is a 5cm threshold at the front door.



The key safe is mounted on the wooden fence to the left of the building. It is 140cm high.

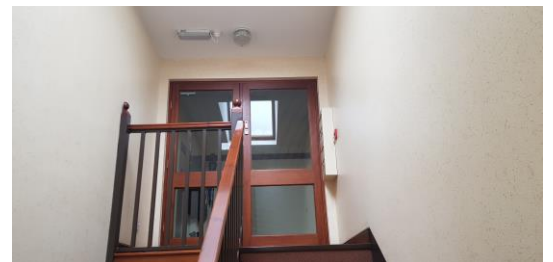
Building Hallway

The main building hallway is light, with lots of glass panels and natural light. There are also lights which are triggered by movement and come on automatically. There is also an emergency lighting system when required. The floors are carpeted with short pile durable carpet.

The apartment is situated on the second floor - there are three flights of stairs in blocks of 14, 3 and 12 stairs respectively. The stairs are 18cm high and 28 cm wide. There is no lift access.

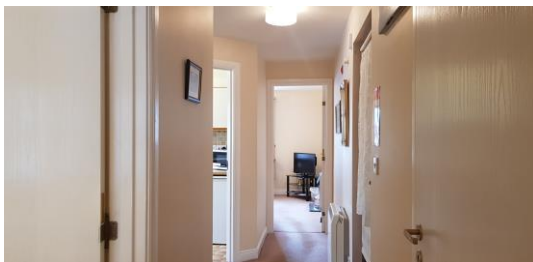
Entrance to Catbells

There is a second entrance door to the top floor apartments. The door is 80cm wide. Access is via a code, the code pad is approx 120cm high. There is a 5cm threshold at the entrance door. Apartment 22 is to the right-hand side of the hallway. The front door is 80 cm wide and keyhole height 100cm.



Hallway

The apartment hallway is 104cm wide and 120cm in length. All rooms, except the lead off from the hallway.



Bathroom

Door width 72cm

Free space 136cm x 108cm

Pull light switch 120cm high and pull switch for the electric shower is height 178cm

Floor covering - linoleum

Toilet height 42cm

Toilet roll holder 80cm high

Sink 84cm high

Bath height 52cm from floor, depth 32cm. Tap height 50cm – at the end of the bath.

Shower over bath. Shower controls 140cm high

There is a handrail in the bath/ shower

There is a shaver socket.



Twin Room

Door 72cm wide

Light switch height 120cm

1 x bedside lamps

2 x 80cm divan single beds, height 59cm

Free space between beds 45cm x 160cm

Free space at bed end 196cm x 110cm



Double Bedroom

Door 72cm wide

Light switch, 118cm height

Double divan bed, height 54cm

Free space to sides of bed 230cm x 125cm to the right and 220cm x 60cm to the left

Free space at bed end 320cm x 66cm



KESWICK

HOLIDAY HOMES

Lounge/Diner

Door width 72cm, there is a free space of 80cm x 90cm as you enter into the room. There is further free space in the centre of the room of 350cm x 257cm

Light switch 120cm high

2 x 2 eater leather sofas - seat height, 43cm, arm height 55cm

1 x upholstered pouffe – 24cm x 45cm

Furniture can be moved to offer greater access when necessary.

Nest of tables, largest is 40cm x 50 cm and height 45cm

Remote control for TV & DVD

Wooden dining table, height 75cm

4 dining chairs, seat height 46cm



Kitchen

Door width 72cm

Floor covering is linoleum

Light switch 120cm high

Work surfaces 90cm high, depth 60cm with sockets 28cm higher than work surface.

Sink taps, 5cm from edge of work surface and 10cm higher

Free space in kitchen 228cm x 130cm

