

5 Greta Side Court **Access Guide**

If you have any queries regarding the following guide please email angela@keswickholidayhomes.co.uk or phone 01768 201042. I will be pleased to help in any way that I can, Angela Spooner

General Statement

5 Greta Side Court is a one bedroom first floor apartment in an old building that was once a pencil mill. It is a quiet residential block of nine properties in total.



The entrance is via the rear of the building and all accommodation is on the first floor.

- All skirting boards are white contrasting with the light-coloured walls and fawn carpet, laminate floor or tiles.
- The property is totally non smoking.
- The lounge, hall and main bedroom have night storage heaters which have individual controls.
- All electrical equipment is PAT tested annually for safety.
- Mobile coverage is generally good for any service although in exceptionally bad weather, signal may be interrupted.
- The bus terminal is just approx. 5 minutes away on foot, near Booths supermarket.
- The nearest railway station is Penrith some 18 miles away. There is a regular bus service to Keswick.
- Shops in the town centre are approximately 2 minutes walk away – the theatre and lake are a further 10 minutes walk. Car hire and taxis are available in the town.
- There are RADAR toilets in the town in Central Car Park (3 minutes walk) and at Lakeside by the Theatre by the Lake.
- Our property information and all correspondence can be supplied in large print on request.
- No furnishings or bedding contain feathers for guest's comfort.
- The property has smoke alarm.

Car Park

Access to the car park is through a white gate. Car parking is directly in front of the property. There are 8 spaces, allocated on a first come, first served basis. The car park is tarmac and is level.

Entrance

No 5 is accessed via concrete steps on the outside of the building, directly from the car park. There are 7 steps to a landing and then a further 8 steps to the first-floor balcony. The steps are 18cm high and 25 cm deep. There is a handrail in both side of the stairs.

No 5 is just to the right and is the centre flat. The walkway approach is 85cm wide. The front door is 70cm wide and is hinged from the left. The lock is 80cm high.

The key safe is mounted on the wall to the left of the door, it is approx. 150 cm high.

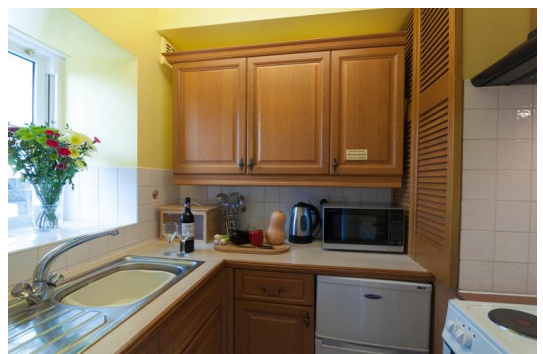
Lounge/diner

- The front door leads directly into the lounge/dining room and hall space.
- Free space in the hall is 230cm x 78 cm.
- Light switch is 140 cm high.
- There is a drop leaf dining table which is 75cm high. The two dining chairs are 44cm high.
- Three seated cottage style sofa and one matching chair. The seats are 42cm high and the arm rests are 50cm high.
- Standard floor lamp by the side of the sofa, which is operated by your foot, on the floor.
- There is an additional convector heater for use if required.
- Chest of three pine drawers with a lamp on top.
- Pine unit for Radio, TV, Blue Ray DVD/CD Player with Catchup TV installed. The television is on top of the unit.
- Smoke detector on the ceiling in the lounge to your left when coming out of the kitchen.
- Free space in the lounge of dimensions 260cm x 170 cm



Kitchen

- The kitchen is small but compact leading off the lounge through a sliding door.
- The door opening is 57cm wide and the handle is at height 50cm.
- Fitted light wood floor and matching wall units with additional strip lighting under the wall units. The units are standard size, 60cm depth.
- Fridge with small freezer compartment. Microwave, toaster, kettle, electric oven/separate grill, and electric hob. Oven door is side opening, extractor fan over the hob.
- Single stainless steel sink unit with cupboards underneath. The taps are 45cm from the edge of sink.
- Fire blanket situated on the wall at the side of the draining board.



Laundry

- There is no washing machine but a launderette is situated on the corner of Otley Road, approximately two minutes' walk away.

There is a door from the lounge into a further hall space and leading to the bathroom and bedroom, Door width is 76cm. There are coat hooks in the hall space between the bedroom and the bathroom, hooks at height 170cm.

Bathroom

- The door to the bathroom is 68cm wide with handle at 98cm.
- Pull cord light switch at height 144cm
- White low line bath (height 48cm) with electric shower fitted over the bath at the tap end. The bath taps are at height 43 cm and shower controls 150cm.
- Shower rail with shower curtain.
- White toilet at height 40cm.
- White sink at height 80cm with taps 36cm depth. Wall mirror with electric light over (pull cord at 170cm height) situated above the sink.
- Tiled walls and flooring.
- The bathroom is situated off the bedroom.



Double Bedroom

- Door 76cm wide
- Light switch, 140cm height
- Double mattress on pine frame with a wardrobe on left side and a bedside unit with a lamp on the right side. There is an additional reading light fitted to the shelf on the headboard
- Free space to sides of bed 180cm x 40cm to the right and 150cm x 44cm to the left
- Free space at bed end 210cm x 60cm
- There is also an adjustable stool in front of the window with a mirror on the window base.
- Full length wall mirror on the bedroom wall.
- Sheets, duvet covers and pillowcases, and cotton towels.

