

20 Greta Grove House, Elliot Park, Keswick
Access Guide

If you have any queries regarding the following guide please email angela@keswickholidayhomes.co.uk or phone 01768 201042. I will be pleased to help in any way that I can, Angela Spooner

General Statement

Flat 20 Greta Grove House is a modern second floor apartment in a quiet residential low rise block built in the early 1990s. The building entrance is on the ground floor and accommodation is all on the second floor.



- All skirting boards are white contrasting with the light coloured walls and fawn carpets.
- All bedrooms have lights beside the beds as well as main lights, most sockets are below 70cm height.
- The property is totally non smoking.
- All rooms have thermostatically controlled radiators which can also be regulated by individual radiator valves.
- All electrical equipment is PAT tested annually for safety.
- Dogs are not accepted.
- Mobile coverage is generally good for any service although in exceptionally bad weather, signal may be interrupted.
- The bus station is just 200 metres away. The nearest railway station is Penrith some 18 miles away. There is a regular bus service to Keswick.
- Shops in the town centre are approximately 2 minutes walk away – the theatre and lake are a further 10 minutes walk. Car hire and taxis are available in the town.
- There are RADAR toilets in the town in Central Car Park (6 minutes walk), on the old railway station, and at Lakeside by the Theatre by the Lake.
- Our information and all correspondence can be supplied in large print on request.
- No furnishings or bedding contain feathers for guests comfort.
- The property has 2 smoke alarms and fire alarm system in the hall which are checked regularly.

Residents have access to communal grounds around Greta Grove House

Car Park

Space No 20 is 250cm wide and 5m long. The car park is tarmac and is level. There is a very small 4cm sloping step onto a paved pathway 120cm wide which leads to the entrance to Greta Grove House.

Greta Grove House Entrance

The apartment Key safe is in the porch area and is 140cm high.
Bell height 122cm; Keyhole height 101cm
Threshold step over front door is 4cm high and 8cm wide.
The building front door 78cm wide.



Building Hallway

The main building hallway is light, with glass doors and is lit with a central light. There is also an emergency lighting system when required.
The floors are carpeted with short pile durable carpet.

Lift and Stairs

There is a lift serving the first and second floors.
There are four sets of 8 stairs to the second floor. Each stair is 26cm wide and 17cm deep.

Entrance to Apartment 20

There is a door on right hand side of the hallway, leading to apartments 19 and 20. The door is 82cm wide.
A corridor of length 320 cm and width 105cm leads to the front door of apartment 20.
The apartment front door is 77cm wide and keyhole height is 93cm.

The apartment layout is as follows:

Hallway

The apartment hallway is L shaped, set out as follows :

- one side leading to the kitchen and lounge/dining room - free space is 523cm x 99cm. The central heating thermostat is at height 134cm
- the other side leads to the two bedrooms and bathroom – free space 378cm x 99cm. There is an intercom phone for visitor call at height 130cm

The apartment has short pile fitted carpet throughout.

Kitchen

Door width 67cm
Floor covering is linoleum
Light switch 135cm high
Work surfaces 90cm high, depth 60cm with sockets 19cm higher than work surface.
Taps are 18cm above sink surface.
Kitchen bar height is 91cm, depth 40 cm and width 150cm. There are 2 stools at height 65cm
Free space in kitchen 360cm x 92cm



Lounge/Diner

Door width 77cm, there is a free space of 138cm x 188cm as you enter the room

2 x 2 seater upholstered sofas, seat height 50cm, arm height 66cm

Free space in room approximately 250cm x 162cm

Furniture can be moved to offer greater access when necessary.

There is a fire place with a 5cm step up.

3 x side tables – height 60cm

Light switch 135cm high

All sockets are 38cm high or below

Remote control for TV & DVD

Rectangular table, height 74cm. Standard size is 150cm x 85cm

4 dining chairs, seat height 47cm



Master Bedroom

King size bed, height 65cm

Light switch at 135cm

Free space to sides of bed 202cm x 170cm to the left and 236cm x 57cm to the right

Free space at bed end 160 x 66cm

Chest of drawers height 107cm



Ensuite Bathroom

Door width 68cm

Pull cord light switch 144cm high

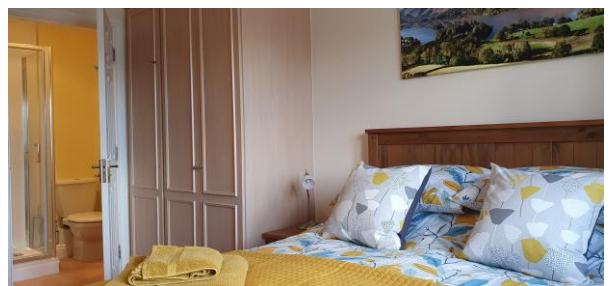
Toilet 40cm high

Sink 90cm high

Toilet roll holder 89cm high

Single shower cubicle with electric shower, door opens to 47cm wide, step into cubicle is 16cm high

The floor is carpet (temporary) and free space in the bathroom is 120cm x 67cm



KESWICK

HOLIDAY HOMES

Double Bedroom

Door 77cm wide

Light switch 135cm high

Double bed, height 60cm

Free space to the right of the bed is 166cm x 54
to the left is 166cm x 43 cm.

Free space at bed end 137cm x 185cm

Chest of drawers at height 119cm



Bathroom

Door width 67cm

Free space 171cm x 136cm

Light switch 149cm high

Floor covering is carpet (temporary)

Toilet height 40cm

Toilet roll holder 58cm high

Sink 86cm high

Bath with shower over. Bath is 167cm long, stepover is
52cm. Shower controls are 13cm

Towel rail.

